

Valerie

125 / 150

Installation Manual

fanco 

Before installing your new Fanco exhaust fan, it is important that you read and follow these instructions prior to installation, even if you feel you are quite familiar with this type of product. Please keep this document handy for future reference as it contains servicing and maintenance requirements.

WARNING

Disconnect the fan from power mains prior to any connection, servicing and repair operations.

Mounting and maintenance are allowed for duly qualified electricians with valid electrical work permit for electric operations at the units up to 1000V after careful study of the present user's manual.

The single-phase power mains must comply with the acting local electrical norms and standards.

The fixed electrical wiring must be equipped with an automatic circuit breaker. The fan must be connected to power mains through an automatic circuit breaker QF integrated into the fixed wiring system with the gap between the breaker contacts on all poles not less than 3 mm.

Check the fan for any visible damages of the impeller and the casing before starting installation.

The casing internals must be free of any foreign objects which can damage the impeller blades.

Misuse of the device or any unauthorized modification is not allowed.

The fan is not to be used by children and persons with reduced physical, mental or sensory capacities, without proper practical experience or expertise, unless they are controlled or instructed on the product operation by the person(s) responsible for their safety.

Do not leave children unattended and do not let them play with the product.

Take steps to prevent ingress of smoke, carbon monoxide and other combustion products into the room through open chimney flues or other fire-protection devices. Sufficient air supply must be provided for proper combustion and exhaust of gases through the chimney of fuel burning equipment to prevent back drafting.

Transporting medium must not contain any dust or other solid impurities, sticky substances or fibrous materials.

Do not use the fan in the environment containing hazardous or explosive materials and vapours, i.e. spirits, gasoline, insecticides, etc.

Do not close or block the fan intake or extract vents in order to ensure the most effective air passage.

Do not sit on the fan and do not put objects on the fan.

Fulfil the requirements stated in this user's manual to ensure long service life of the product.

Recycle at the end of the service life.

Do not dispose the product with unsorted municipal trash.

The Valerie exhaust series described in this user's manual is an axial window exhaust fan designed for exhaust ventilation and heating during wintertime of small and medium sized residential and commercial premises.

DELIVERY SET

1. Fan: 1 piece
2. Screws: 4 pieces
3. User's manual
4. Packing box
5. Bolts: 4 pieces
6. Nuts: 4 pieces
7. Plastic nuts: 4 pieces
8. Sealing gasket: 2 pieces

SHORT DESCRIPTION

The product described here is an axial fan for exhaust ventilation of small and medium-sized products.

The fan is made of white plastic.

The fan is equipped with automatic louvre shutters.

The fan is equipped with a ball bearing motor.

The fan is designed for connection to Ø 125mm and 150mm air ducts.

Due to constant improvements the design of some models may slightly differ from those ones described in this manual.

OPERATION RULES

The fan is designed for connection to AC 220-240 V, 50 Hz power mains.

Air flow direction in the system must match the pointer direction on the fan casing.

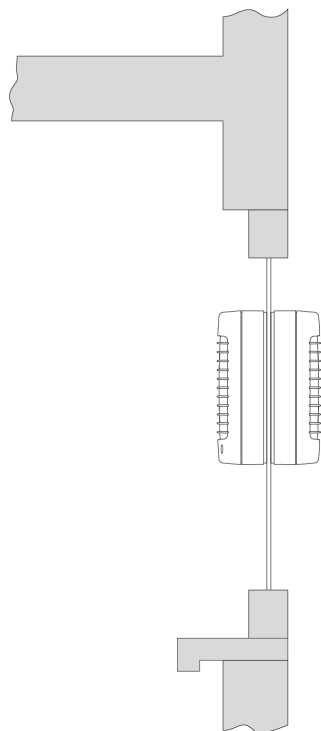
Ingress protection rating against access to hazardous parts and water ingress: IP24

The fan is rated for operation at the ambient temperature ranging from +1°C up to +45°C.

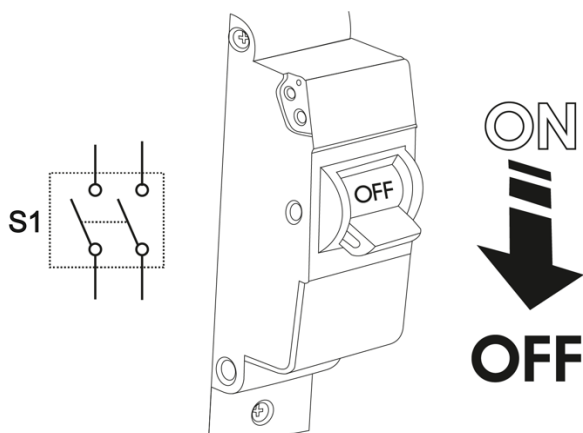
The fan requires no grounding.

MOUNTING

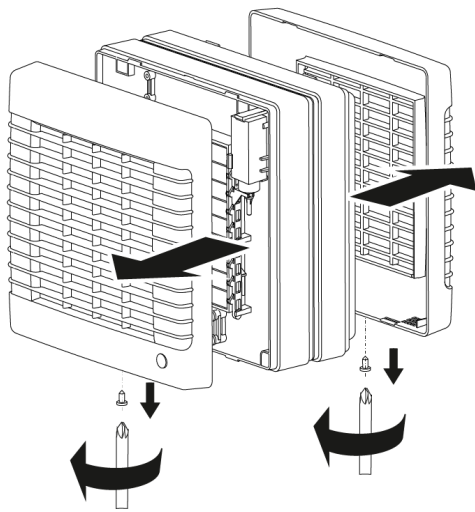
The fan is designed for window or wall mounting like shown in the respective diagram below.



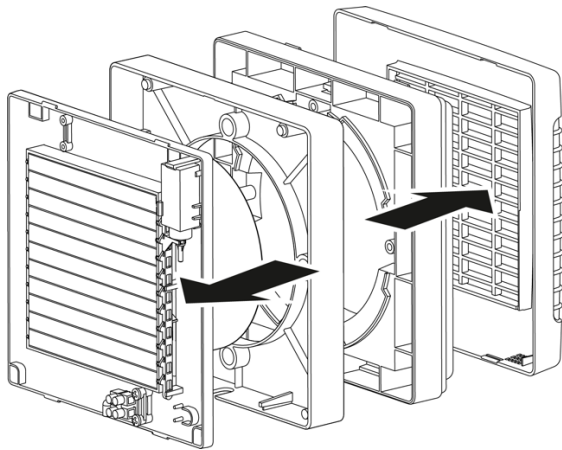
STEP 1 - Cut off power supply and make preparations in the room to install a fan.



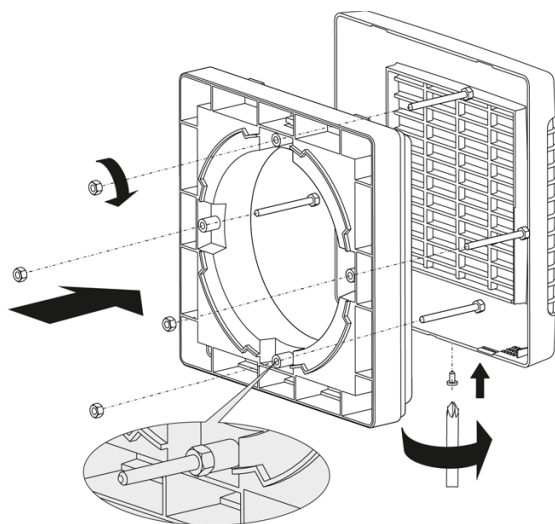
STEP 2 - Using a crosshead screwdriver unscrew the fastener and remove the fan cover.



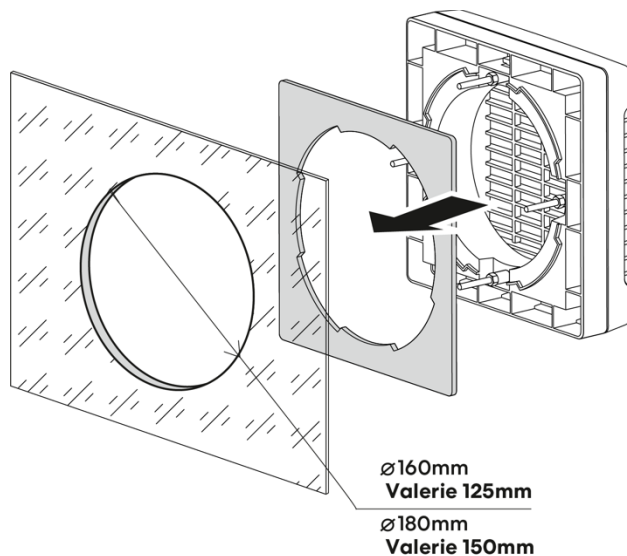
STEP 3 - Dismantle the fan and its components as shown below.



STEP 4 - Install the included bolts to the intermediary casing on the side of the back cover or the cowl. Fix the bolts with the included nuts and sit the back cover or the hood on the casing.

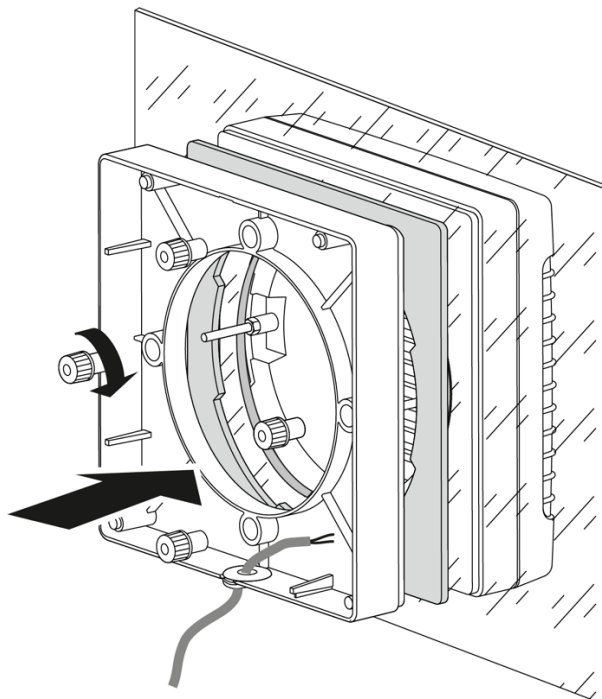


STEP 5 – The fan is designed for mounting on glass (partition) with 4 to 17 mm thickness. To install the fan with the impeller diameter 125 mm cut $\varnothing 160$ mm hole in the glass and for the fan with the impeller diameter 150 mm cut $\varnothing 180$ mm hole. Insert one sealing gasket onto the pre-mounted casing and insert the unit into the cut-out hole.

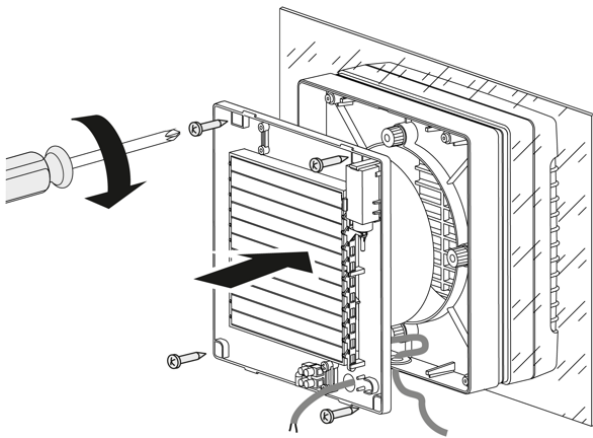


STEP 6 – Insert the second sealing gasket onto the other side of the glass. Use the bolts as guides to get them onto the internal intermediary casing. Avoid the sealing gasket from jamming. Fasten the casing tightly by means of threading the plastic nuts on the bolt ends and tighten them in turn.

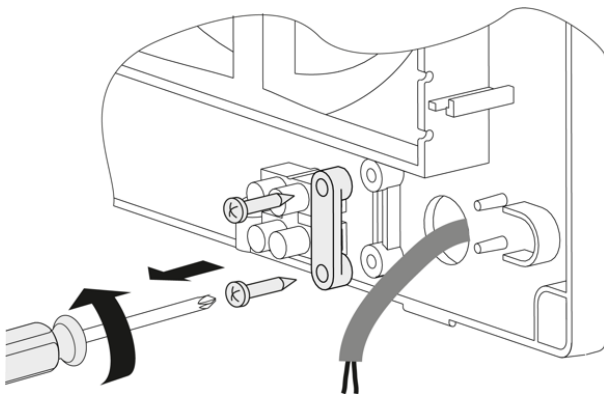
Please do not add excessive force while tightening so as not to break the glass or damage the plastic nuts.



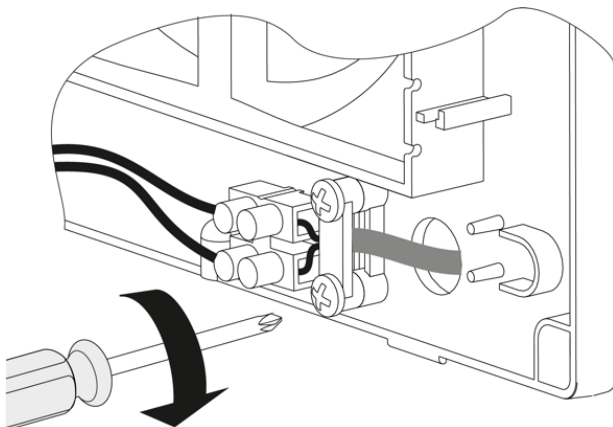
STEP 7 – Thread the wire through the sleeve in the internal casing and through the hole in the main casing. If the casing does not feature a cut-out hole, then it must be cut out at this time. Fasten the main casing with the 4 included screws.



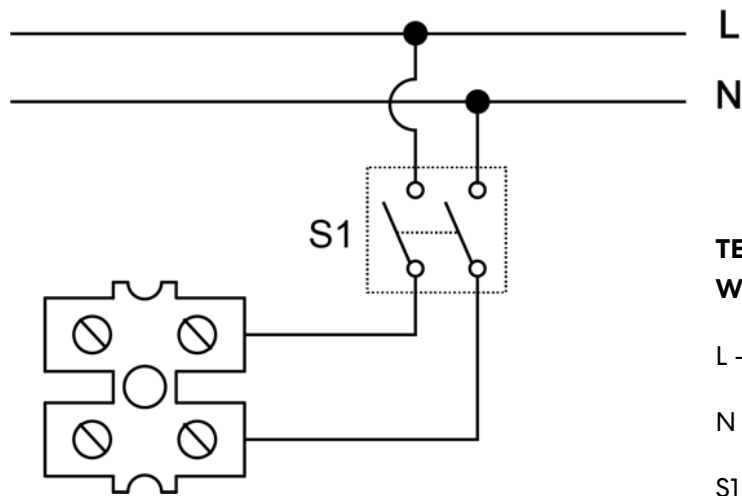
STEP 8 – Unscrew and remove the dowels of the retaining clamp from the wire.



STEP 9 – Connect the wire to the terminal box by following the wiring diagram (shown on next page). Install the retaining clamp back and secure it with the included screws.



WIRING DIAGRAM



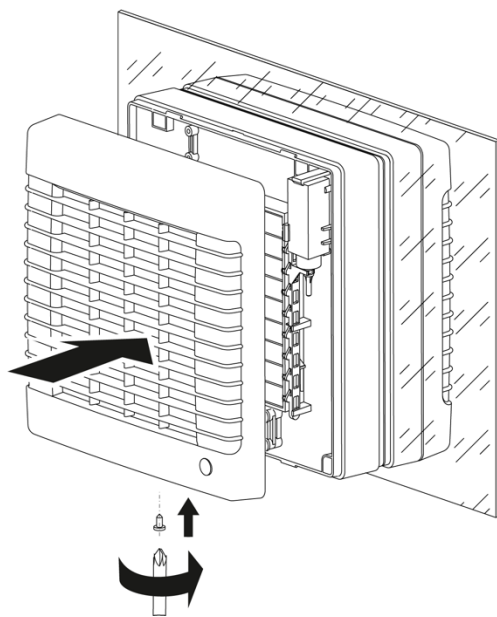
TERMINAL DESIGNATION KEYS AT WIRING DIAGRAMS:

L - phase (only for 220-240 V power mains)

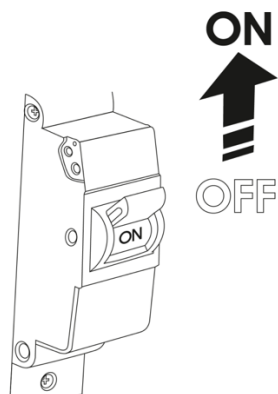
N - 0 (only for 220-240 V power mains)

S1 - external switch

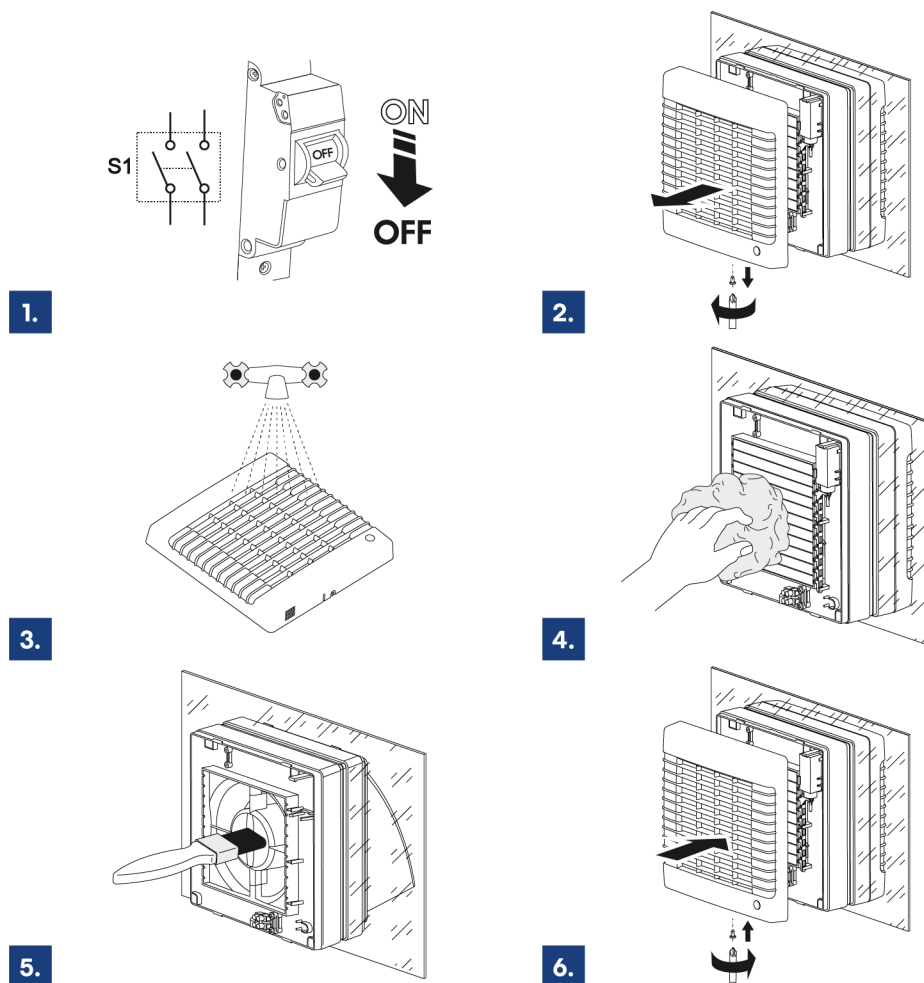
STEP 10 – Cover the fan and secure the cover using a crosshead screwdriver.



STEP 11 – Turn on mains power.



MAINTENANCE



The product surfaces must be regularly cleaned from dirt and dust. Cut off power supply prior to any maintenance operations (See Step 1). Remove the front cover (Step 2), clean the fan following Step 3 and 4 using detergent and water to clean the external fan surfaces. To clean the internal fan surfaces, use a brush (Step 5). Mount the fan cover back on (Step 6) and connect the fan to power supply. For cleaning use a soft cloth or brush and mild detergent water solution.

Avoid water dripping on the electric components. Wipe the surfaces dry after cleaning.

STORAGE REGULATIONS

Transport the product by any transportation vehicle in the manufacturer's original package.

Store the delivered product in the manufacturer's original packing box in a dry ventilated premise with the temperature range from +5°C up to + 40°C and relative humidity less than 80%.

The storage environment must not contain dust, acid or alkali vapours that may cause corrosion of the product part

fanco●